

AS-TRONIC - 12 AS 1800 / 16 AS 2200 / 12 AS 2301 / 16 AS 2601
9 Tal. Altas Prestaciones / 9 Bolt. high Perf

Posterior Neumático con ó sin Intarder
Rear Pneumatic with or without Intarder



Descripción Description

Toma de fuerza reforzada de 2 piñones, 2 relaciones internas para montar en el registro frontal de 9 taladros de la caja de cambios. Accionamiento neumático, para montar bombas ISO 4 taladros. Indicador de funcionamiento opcional.

Heavy Duty Power Take-off 2 gears, with two internal ratios mounting on rear 9 bolts-opening of the Gearbox. Pneumatic shifting, to connect Iso 4 bolts pumps. Optional: Passing contact switch.

Datos Principales Main Data

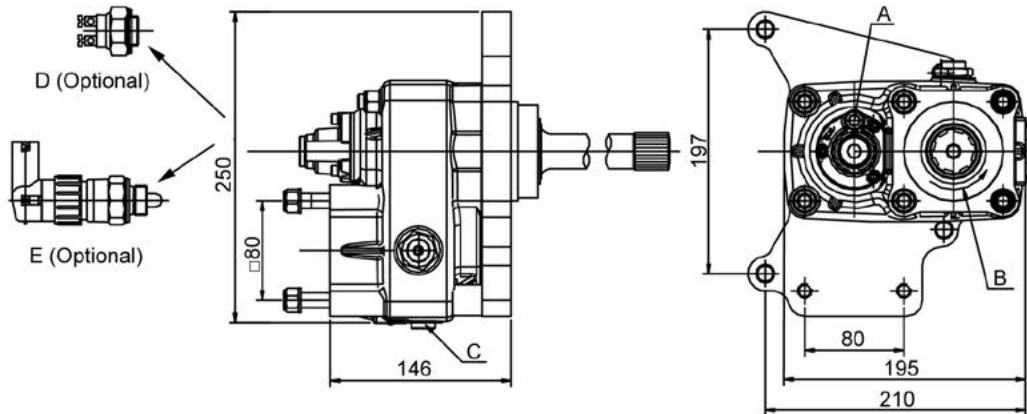
| | | | |
|---|---------------------------|----------------------|------------------------|
| Relación Interna Internal Ratio | | 1:1,04 | 1:1,26 |
| Par nominal Torque (Nm) | Continuo Continuous | 600 | 500 |
| | Intermitente Intermittent | 800 | 700 |
| Potencia (1000 r.p.m.) Power (HP) 1000 r.p.m | | 85 C.V // 64 kW | 70 C.V // 52 kW |
| Lado de montaje Mounting position | | Posterior Rear | |
| Sentido de giro de la bomba Pump rotation | | Derecho ClockWise | |
| Peso Weight (Kg) | | 18 | |
| Relación Motor - Toma de Fuerza Engine to PTO ratio | | ANEXO I ATTACHMENT I | ANEXO II ATTACHMENT II |

Códigos y Combinaciones Part Numbers and Combinations

| Tipos de salida Output types | | Plato Flange | Bomba Pump (DIN 5462) |
|----------------------------------|---------|--------------|-----------------------|
| Relación Internal Internal Ratio | 1: 1,04 | 1022202 | 1022203 |
| | 1: 1,26 | 1022302 | 1022303 |

AS-TRONIC - 12 AS 1800 / 16 AS 2200 / 12 AS 2301 / 16 AS 2601 - 9 Tal. Altas Prestaciones / 9 Bolt. high Perf

Posterior Neumático con ó sin Intarder
Rear Pneumatic with or without Intarder



Notas Notes

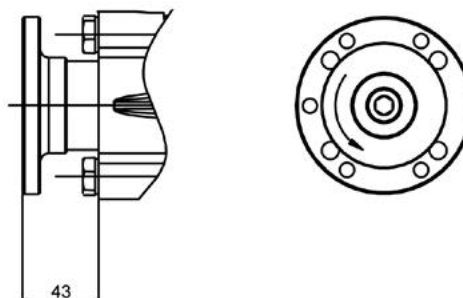
| | |
|---|--|
| Trabajo cont.-Alto par: Montar enfriador aceite | On continuous works & high torque: Install an oil cooler |
| A Toma de aire, rosca 1/8" GAS | A Air connection, thread 1/8" BSP |
| B Sentido de giro | B Rotation |
| C Tapón de drenaje del aceite | C Oil drain plug |
| D Interruptores neumático (100070018) | D Pressure switch. P/N 100070018 |
| E Interruptores de contacto (9024999) | E Passing contact switches. P/N 9024999 |

Tipos de Salida Output Types

Plato / Flange

SAE: 1100
1300
1400

DIN: 90
100



AS-TRONIC - 12 AS 1800 / 16 AS 2200 / 12 AS 2301 / 16 AS 2601 -
9 Tal. Altas Prestaciones / 9 Bolt. high Perf

Posterior Neumático con ó sin Intarder
Rear Pneumatic with or without Intarder

Anexo I Attachment I

| | | | |
|---|--|----------------|-------|
| Relación motor - Toma de Fuerza Engine to PTO ratio | 12AS-2331TD / 1631TD / 1931TD / 2131TD / 2141TD / 2341TD / 2301TD / 2431TD | /15,86-1,0 IT | 0,853 |
| | 12AS-2540TD / 2430TD / 2340TD / 2140TD / 2130TD / 1930TD / 1630TD / 2330TD | /15,86-1,0 | |
| | 16AS-2630TO / 2601TO | /14.12-0,83 | 1,154 |
| | 16AS-2631TO | /14,12-0,83 IT | |
| | 12AS-1800 | /14,89-1,0 IT | 0,79 |
| | 16AS-2230TD | /17,03-1,0 | |
| | 16AS-2601TD / 2231TD / 2601TD | /17,03-1,0 IT | |
| | 16AS-2200 | /15,89-1,0 IT | 0,738 |
| | 12AS-2940TO / 2740TO / 2540TO / 2530TO / 2330TO | /12,29-0,78 | 1,404 |
| | 12AS-1930TO / 1931TO / 2130TO / 2131TO / 2301TO / 2330TO / 2331TO / 2530TO / 2531TO / 2541TO / 2741TO / 2941TO | /12,33-0,78 | |
| 12AS-2741TO / 2941TO | /12.29-0.78 IT | | |

Anexo II Attachment II

| | | | |
|---|--|----------------|-------|
| Relación motor - Toma de Fuerza Engine to PTO ratio | 12AS-2331TD / 1631TD / 1931TD / 2131TD / 2141TD / 2341TD / 2301TD / 2431TD | /15,86-1,0 IT | 1,033 |
| | 12AS-2540TD / 2430TD / 2340TD / 2140TD / 2130TD / 1930TD / 1630TD / 2330TD | /15,86-1,0 | |
| | 16AS-2630TO / 2601TO | /14.12-0,83 | 1,399 |
| | 16AS-2631TO | /14,12-0,83 IT | |
| | 12AS-1800 | /14,89-1,0 IT | 0,958 |
| | 16AS-2230TD | /17,03-1,0 | |
| | 16AS-2601TD / 2231TD / 2601TD | /17,03-1,0 IT | |
| | 16AS-2200 | /15,89-1,0 IT | 0,895 |
| | 12AS-2940TO / 2740TO / 2540TO / 2530TO / 2330TO | /12,29-0,78 | 1,701 |
| | 12AS-1930TO / 1931TO / 2130TO / 2131TO / 2301TO / 2330TO / 2331TO / 2530TO / 2531TO / 2541TO / 2741TO / 2941TO | /12,33-0,78 | |
| 12AS-2741TO / 2941TO | /12.29-0.78 IT | | |